



Cnr Oatley Ave & Hurstville Rd
 Oatley NSW 2223
 Subscribe: <https://grcoatley.schoolzineplus.com/subscribe>

Email: oatleysnr-h.school@det.nsw.edu.au
 Phone: 02 8567 3700
 Fax: 02 9570 3622



12 March 2019

Principal's Report



Welcome

It is with much pleasure that I extend a very warm welcome to all students and their parents, especially those who are new to our school and are joining us in Year 11. Despite the heat we've had a predictably smooth and orderly start, one that we expect and work hard to achieve. While traditionally most students who are new to

our school quickly settle into school routines, it can be a difficult transition from one school to another for some students. Should any student or parent require assistance, I encourage you to make contact with the school as soon as possible.

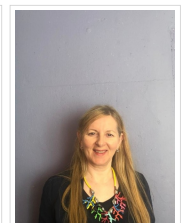
It was great to see so many parents, students and caregivers at our 'Meet the Teacher' afternoon. The afternoon was a fantastic success. Feedback received was positive, many grateful for the warm welcome to our school and the opportunity to meet teachers and Executive. Thank you to all staff and students for representing GRC Oatley Senior Campus in such a positive and professional manner. A special thank you to Ms Jamieson, Ms Donald, Ms Kalan, Ms Byron, Ms Little and our Hospitality students for the magnificent catering. The food was definitely a topic of conversation on the night. Our school is very fortunate to have such dedicated people contributing to its success.



Also new to the school are a number of teachers and support staff. We have welcomed:

- Ms Jennifer Donald – Head Teacher TAS

- Mr Andrew Salter – TAS Teacher
- Ms Kareena Little– TAS Teacher
- Mr Allison Byron – TAS Teacher
- Mr Scott Gerrard – CAPA
- Ms Mallory Flavell – HSIE
- Mr Rob Miller – PDHPE
- Ms Cheryl Hudspeth – Special Education
- Ms Robyn Fletcher – Special Education
- Ms Sue Spindler – Special Education
- Mr Patrick Fisher – Cross-campus teacher
- Ms Lauren Osmond – Cross-campus teacher
- Ms Alison Edeling – Cross-campus teacher
- Mr Jason Rea – Cross-campus teacher
- Ms Najwa Samman – Cross-campus teacher

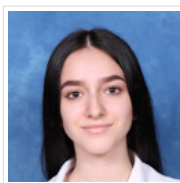


Stellar HSC Results

Congratulations to our 2018 Year 12 students who, individually and collectively, performed exceptionally well in the Higher School Certificate (HSC). There is an expectation that we will do well, that our students will be stretched and challenged, and that our teachers will do their very best – and more! – to assist students in realising their potential.

- School Ranking - In 2018, GRC Oatley senior Campus moved up 46 places in the school rankings.

- Top ATAR - 99.4 - Irene Katsadima



- Premier's Award - All Rounders
 These students have received a Band 6 for courses totalling 10 or more units
 - Irene Katsadima and Amy Trieu



- Top Achievers List

• Eleftheria Papadopoulou	Modern Greek Extension	2nd is state
• Evangelia Sakerellou	Modern Greek Extension	3rd is state
• Evangelia Sakerellou	Modern Greek Continuers	3rd is state
• Irene Katsadima	Modern Greek Continuers	5th is state
• Jose Ruiz Restrepo	Spanish Extension	2nd is state
• Laura Lopez	Spanish Extension	4th is state
• Laura Lopez	Spanish Continuers	5th is state
• Karam Yagan	Arabic Continuers	2nd is state



- HSC Distinguished Achievers List
 Band 6 - equivalent to 90% or above in any 2 Unit HSC Course / E4 - 45 out of 50 in any extension HSC course
 - 59 students were named on the list
- Course Band

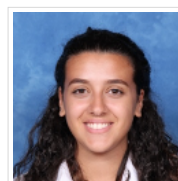
There were 585 Band 5 and 6's awarded to students in 2018. These are the top two bands in the HSC.

- Major Works Excellence Nominations - HSC Nomination Music 1

Each year our students are nominated for prestigious inclusion in a show-case of HSC major works across the state. From the nomination stage, in a rigorous process, students across the

state are selected to show their major works in venues across Sydney and regional areas. To be placed in the final stage is a great honour.

It is with pleasure that I inform our school community that Marianna Gallifuoco has been nominated for possible inclusion in ENCORE, a selection of performances and compositions from Higher School Certificate Music students.



Student Leadership

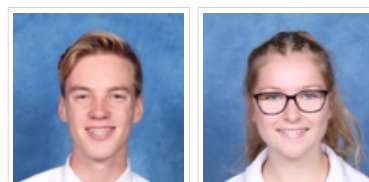
Student leadership at GRC Oatley Senior truly reflects the quality of students we have in our school. At our school, student leadership is expected and practised on a daily basis. The quality of this leadership, especially that demonstrated by the Captains, Vice Captains, SRC Presidents and the SRC, is a critical determinant in creating loyalty, pride and ethics within our school. Student leadership is about giving respect, not demanding respect. It's about respecting the human rights of everyone, of other people and your own.

On behalf of the school community, I congratulate our outgoing Student Representative Council on their wonderful achievements. They have excelled at ensuring that high quality student leadership, founded on the school's values of Respect, Responsibility and Excellence, underpins our school's ethos, and I thank them on behalf of the GRC Oatley community for their outstanding leadership of the student body over the last twelve months.

I am extremely confident that our incoming 2019 SRC will rise to the challenge and build on the strong legacy that this year's student leadership team have left. They will be charged with successfully implementing changes to structures within the school from a student perspective, as well as being the sounding board when students' views on issues relating to their school are required.

It is with pleasure and great pride that I announce the following students as the 2018 senior leaders:

2019 SCHOOL CAPTAINS



Jack Appleby Claire Larkin

2019 VICE CAPTAINS



Rithysak Yous Ella-Rose Liasides

2019 SRC PRESIDENT & SRC VICE PRESIDENT



Koy Silachan Michelle Ding

2019 Year 12 Student Representative Council

- | | | |
|-------------------|-----------------------|-------------------|
| • Danish Baig | • Jayden Danes | • Brian Hwang |
| • Ashley Beitelis | • Kristopher Diskoros | • Vivian Liang |
| • Hassan Baydoun | • Vicky He | • Mikashen Pillay |
| • Fatima Bazzi | | |

2019 Year 11 Student Representative Council

- | | | |
|------------------------|--------------------------|-------------------|
| • Barbra Abbas | • Ida Chou | • William Murray |
| • Isha Akbari Jamarani | • Valandou Contzonis | • Adriana Pefkos |
| • Jasmine Awad | • Dimitriy Esdaile-Watts | • Matthew Sanders |
| • Afan Baig | • Hani Jebile | • Teresa Smith |
| • Isabelle Basevski | • Jacqueline McGowan | • Zac Stepto |
| • Brendan Chan | | |

P&C AGM

Our P&C AGM will be held on Monday 25th March 2019 in the Horseshoe Theatre. Parents, as partners in the education process, have a right and a responsibility to play an active role in the education of their children. The P&C enables parents and citizens to meet together to determine the needs and aspirations of the school community.

P & C meetings provide a forum for parents to learn about the activities at the school, raise concerns and have input into

the decisions affecting their children. I am looking forward to meeting with you on Thursday.

School and P&C Contributions

The School Contribution schedules will be sent out to all families shortly. These schedules enable parents to identify what monies are owed for their child. Invoices will include any outstanding subject fees owing from last year.

We appreciate the many families who have already paid these fees and contributions, thus allowing us to place the necessary orders for equipment that will be used to support your child's learning in 2019.

Our P&C Association welcomes payment of the P&C contribution, which also assists the school to provide additional resources above those provided for through global funding sources.

Uniform

GRC Oatley Senior Campus is a uniform school. The school uniform creates an identity for our school and is an important part of being a school student.

It is essential that all students are in correct school uniform every day and wear the uniform correctly during school hours, while travelling to and from school, and when engaged in school activities out of school hours.

Our school uniform reflects school community standards and expectations. It was developed in consultation with and agreed upon by the school community. It is based on a strong student and parent voice.

Please support us in ensuring that your child arrives to school in full school uniform. The school uniform requires all students to be in black leather shoes and white socks.

Annual School Report

Our Annual School Report will be available to all parents and community members via our school website by the beginning of next term. It is an informative document that contains worthwhile information about the school's academic performance, sporting performance, extra-curricular activities and outstanding achievements over the 2018 calendar year.

School Safety & Enforcement Program

The safety of students and other road users around schools is a priority within the Georges River Council area and driver education plays an important part in reducing the incidences of illegal parking.

To assist in promoting safer parking around schools, Council has developed a driver education brochure that outlines options to help minimise parking issues. It includes a list of offences that are more commonly encountered as well as the associated penalties.

Council officers will be undertaking both on foot and vehicle based rostered patrols of schools to support this initiative. Where drivers choose to ignore parking rules, creating safety risks or traffic issues, the issue of penalty notices to these drivers remains a strong deterrent.

Should you require further information, please do not hesitate to contact me weekdays on the number above or aahtong@georgesriver.nsw.gov.au.

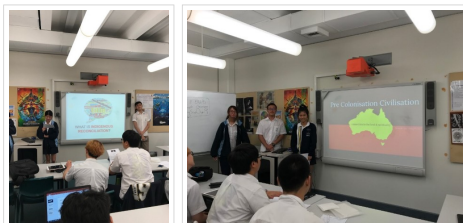
Penalties and demerit points for offences in school zones		
SCHOOL ZONE parking offences	Fine	Demerit Points
Stop on/near pedestrian crossing	\$448	2
Disobey 'No Stopping' sign	\$337	2
Double park	\$337	2
Stop in Bus Zone	\$337	2
Stop on/across driveway	\$337	2
Stopping on footpath/nature strip	\$337	2
Disobey 'No Parking' sign	\$187	2

Parking restrictions apply uniformly state wide to deter illegal parking. For further information, please go to www.georgesriver.nsw.gov.au/Services/Parking-and-Traffic and <http://roadsafety.transport.nsw.gov.au/staying-safe/schools/index.html>. This list of offences is not exhaustive and only indicates some of the penalties for school zones under Road Rules 2014. The information contained in this leaflet is correct as of 1 July 2018, however is subject to change without notice.



In order to better understand Aboriginal culture and the context of the novel, all students participated in group presentations. The topics of the presentations included Pre-colonisation Civilisation, The Stolen Generation, Mabo, Deaths in Custody and Reconciliation. The presentations were also a great opportunity for students to practise their pronunciation and presentation skills!

Mr France



Best Wishes for Term 1

Term 1 is a very busy time as complex organisation is implemented across the school and new students and families are supported during their transition to GRC Oatley. The school year has started very smoothly and our students have already demonstrated great responsibility and maturity during the difficult conditions caused by recent heat.

Diary Dates – Term 1

- P&C AGM Meeting – Monday 25th March (7:00pm)
- Week 11 – Year 12 reports distributed

Diary Dates – Term 2

- Schools resumes for students – Tuesday 30th April
- Year 12 Parent Teacher Night – Tuesday 7th May (4:00 pm – 7:00pm)
- P&C Meeting – Tuesday 27th May (7:00pm)
- Public Holiday – Monday 10th June
- Year 12 Post School Options Parent Information Night – Tuesday 18th June
- Week 8 – Year 11 reports distributed
- Year 11 Parent Teacher Night – Monday 4th July (4:00 pm – 7:00pm)
- P&C Meeting – Monday 24th June (7:00pm)

GRC Oatley Senior Campus is focused on developing students who are not only academically successful but who are thoughtful citizens who contribute to their local community in a positive manner. I look forward to working with you this year to achieve our goal.

Anna Girginis
Principal

English Faculty

What's happening in Year 12 English EAL/D?

This term students have been studying the topic 'Language, Identity and Culture.' Students have been examining how our use of language impacts on how we view ourselves and the way we interact with others. The prescribed text for study is called 'Swallow the Air' by Tara June Winch, which is about an Aboriginal girl searching for family and a place where she belongs.

Mathematics Faculty

Students from GRC Oatley again achieved excellent results when they participated in the University of NSW International Competitions and Assessments for Schools (ICAS) and the Australian Mathematics Competition.

These competitions are an annual event and attract participants from across Australia and overseas. The ICAS Mathematics competition assesses students across 5 Strands of Mathematics and the Australian Mathematics Competition tests mathematical knowledge from all the different strands of Mathematics and has a strong focus on problem-solving.

In 2018, 9 students from Year 11 entered the ICAS Mathematics Competition and 17 students from Years 11 and 12 entered the Australian Mathematics Competition. We are extremely proud to report that students achieved 3 Distinctions and 4 Credits in ICAS and 1 High Distinction, 2 Distinctions, 4 Credits and 4 Proficiency awards in the Australian Mathematics Competition.

ICAS

Distinctions

- Michelle Ding
- Koy Phakakaew Silachen
- Cameron McQueen

Credits

- Carey Chan
- Hau Xu
- Judith Tran
- Brian Hwang

Australian Mathematics Competition

High Distinction

- Anran Zhao

Distinction

- Michelle Ding
- Jie Zhan

Credit

- Brian Hwang
- Koy Phakakaew Silachen
- Judith Tran
- Raymond Wang
- Rozz Godly

Proficiency

- Carey Chan
- Yiwon Chan
- Caitlin Guilfoyle
- Cameron McQueen
- Kelly Zhu
- Julius Nesevski
- Sabrina Zeng
- Huiyu Zhang

In other Maths news...last year we set up a new collaborative learning space for students in mathematics. This has been accessed by many students and the feedback from them has been very positive.

This year, to help support the technology emphasis of our 4 new syllabuses in Mathematics, we have ordered a set of laptops to be used in classes to enable all students to have access to and further develop their skills and application of technology in mathematics. Students are also encouraged to utilise a range of technological supports including Google Classroom, Desmos and Geogebra applications to improve their learning in maths.

Lastly, just a reminder that the more intensive and fast-paced nature of the new Advanced and Extension syllabuses this year means that students must ensure that they are keeping up with the course work and if they encounter issues, they are encouraged to seek assistance and support as soon as they need it.

News from the Support Unit

It has been a great start to 2019 for students in our support classes. They have settled well, and are adapting to their new routine at Oatley. We have had 9 new year 11 students commence this year and they along with the year 12 students have commenced their work experience program for 2019.

Work experience is a fundamental part of our Work and the Community program which allows students to try a variety of different jobs in a variety of workplaces to see what type of employment may suit their personality and their skill base when they finish school at the end of year 12.

This year we have been fortunate enough that Coles Kirrawee have taken on 8 students and Ascalon industries have taken on 6 students to visit the workplace once a week and teach the students some valuable practical skills for employment.

Many of our students have amazing memory skills, can classify, have wonderful computer skills, have an amazing ability to think outside the box and have great practical skills.



How can you help?

Should any families within our school have a business or workplace that may have the capacity to take on a student 1 day a week for a 2-3 hour work placement, could you please get in touch with the Head Teacher Special Education Priscilla Wille on 8567 3700 – students can be supported by staff and it is a wonderful way for these young people to engage with their local community and gain some valuable work skills.

CAPA Faculty

Music

I would like to welcome all the new Year 11 Music students and congratulate them on stepping up to participate in our first formal assembly performance. Many of the students performed “Stand By Me” as a group musical item and they are to be commended for their dedication to recess rehearsals and positive attitude. I hope to hear much more from them as individual performers over the next 2 years.

“In Concert 2019” Sydney Town Hall

On Tuesday 21 May 2019, we participated again in the 600+ voice choir from across NSW in this wonderful concert which will feature Casey Donovan. This is always a great experience for our students and one which they will gain valuable musical knowledge.

Year 12 Music students are busy making final selections of HSC repertoire. This will allow them to focus on refinement for their HSC final performance in the second week of September.

Annette Lynch
Music Teacher

VET Faculty

Students at Oatley have the opportunity to study Hospitality as part of their pattern of study. We offer both Kitchen Operations and Food and Beverage. In Year 11, Hospitality Term 1 practicals are based around the unit of competency Sandwiches. Over the coming weeks they will prepare a range of sandwiches.

Next week on the menu is our famous Chicken Tea Sandwich, some might say ‘fit for high tea with the Queen’.

Please find our famous recipe below if you would like to try it at home.

Rebecca Jamieson
HT VET

Careers

Year 12 UOW Discovery Day.....an interview with Faris Hasan

Tell me something interesting about the day.

The lecture "Law: You be the Judge" was a lecture about learning the essential and necessary skills to be properly equipped to become a successful lawyer and it gave a little insight about what would a real trial consist of. We were able to experience it first hand by doing a "Mock Trial"

What did you enjoy?

I enjoyed every aspect of the day, especially how nice, caring and supportive the lecturers and the teachers are over at University of Wollongong. Also, there are awesome facilities at UOW and the student helpers were great, they guided us to the buildings whenever we needed assistance or when we got lost.

What was your favourite lecture?

My favourite lecture was "How do you manage people?" because it has widened my understanding on how to properly manage people and utilise the employees that I have to their maximum capacity. Also, it taught me that being a manager means a lot more than delegating to other people and being strict all the time. It showed me that a great manager must be able to ensure everyone performs at their best and takes care of them through monetary and non-monetary benefits.

Did Discovery Day help you to decide what you want to do next year?

It helped me in a way that it widened my options on what degree I should choose and to diversify my options as much as possible so I can be flexible to any changes.



Penny Morrison
Careers Adviser