



Uniform Guidelines

We value professional dress and appearance. We are a uniform school. Our community expects and values the wearing of school uniform and that students uphold the Campus by wearing the school uniform with a sense of pride and belonging. All students are expected to dress in full school uniform, except on SRC organised mufti days. Parents show they support the wearing of school uniform when they sign the Learning Agreement prior to enrolment.

The Department of Education and Communities WHS policy requires that covered leather shoes are to be worn, and GRC Oatley's uniform footwear is black, leather, closed shoes. Students will not be permitted to participate in any practical lessons without the correct footwear and uniform.

Hoodies are banned from the school for security reasons, and this policy is strictly enforced. Any hoodies will be removed and only returned to students at the end of the school day.

Senior students do not participate in regular weekly school sport. Tracksuit pants, sports short or runners are not part of the senior uniform and must not be worn. Students are supplied with appropriate sport uniform when they represent the school in various knockout, regional or state events.

Uniform items are not transferrable between the middle campuses and the Oatley Campus which has a distinct uniform for senior students.

Senior Girls



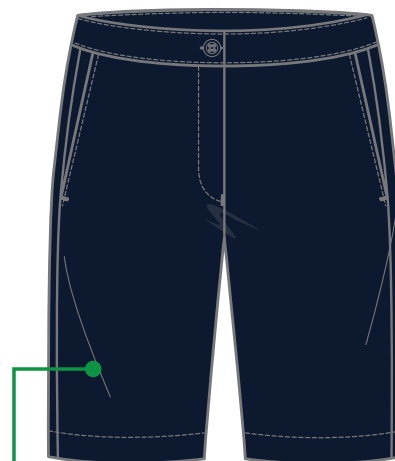
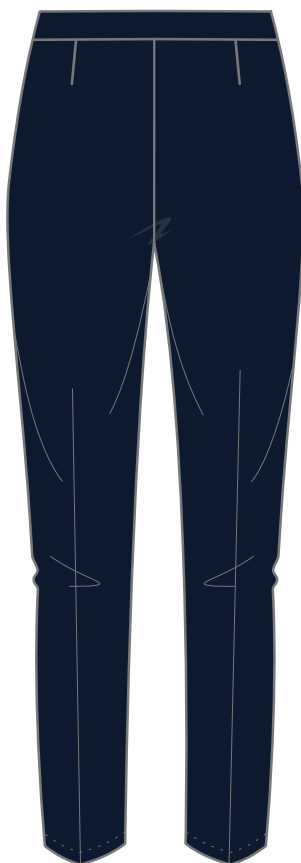
SENIOR GIRLS BLAZER
- W/ EMB



GIRLS SOFT SHELL
- W/ EMB



SENIOR GIRLS PANTS



SENIOR GIRLS SHORTS



ANKLE SOCKS
- NAVY
#97978

Senior Girls



PULLOVER
- NAVY BODY
- W/ EMB
59295

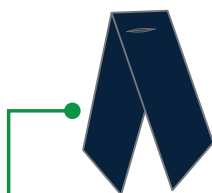


SENIOR GIRLS OVER BLOUSE
- WHITE BODY
- NAVY PIPING ON COLLAR & CUFF
- EMB ON LEFT CHEST
- #65854 STYLE
- NAVY TAB TIE
- SPLITS AT SIDE AND FRONT



SENIOR GIRLS SKIRT
DOUBLE BOX PLEATS

CHECK CODE 1016



TAB TIE
- NAVY W/ BUTTON HOLE



TIGHTS
-NAVY
#86260

Senior Boys



SENIOR BOYS BLAZER
- W/ EMB
98446



BOYS SOFT SHELL
- W/ EMB



SENIOR BOYS PANTS
- NAVY BODY

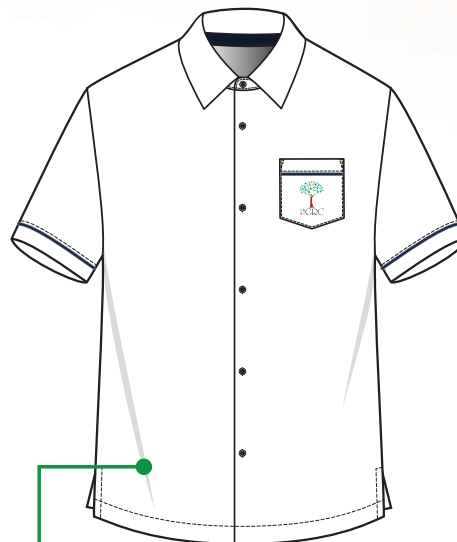


SENIOR BOYS SHORTS
- NAVY BODY

Senior Boys



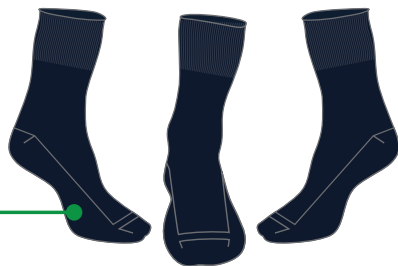
SENIOR PULLOVER
- W/ EMB
59295



SENIOR BOYS DELUXE OVER SHIRT
- WHITE BODY
- NAVY INSIDE OF COLLAR
- W/ EMB & NAVY PIPING ON POCKET



BOYS BELT
- BLACK
#99011



ANKLE SOCKS
- NAVY
#97978



SCARF
- W/ EMB
71226



TIE
- GOLD/RED/BLUE STRIPES
- W/ EMB
#77325

Available at



Hurstville

276 Forest road

9580 1022

Roselands

Shop G11, Roselands

9750 6377

Proudly an All Australian owned company

Lowes provides a rebate to the college on every item of uniform sold.

Please support our official supplier.

Exclusive stockists of



Premium Quality Schoolwear

Footwear Guidelines:-

The Department of Education through its WHS Policy, is committed to providing a safe working and learning environment for all employees, other undertaking work, students and visitors in accordance with statutory and regulatory obligations and corporate objectives.

Footwear is an important safety item. Good soles provide a sound grip on the floor preventing accidents such as slips, trips and falls from occurring. Footwear can also protect feet from damage by accidents such as falling objects or chemical spillages.

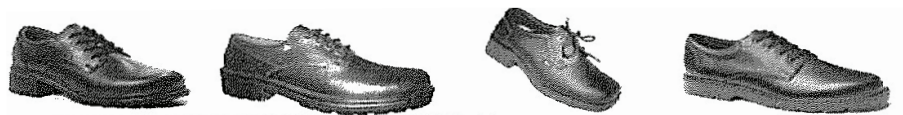
In accordance with the Safe Working Policy, the Department has identified areas of its workplace where appropriate footwear must be worn by employees, students and visitors to ensure their safety.

- Industrial Arts and Trades Workshop areas
- Science Laboratories
- Canteen or Food Technology (kitchen areas)



Examples of footwear which COMPLY with The Department of Education's WH&S guidelines

Girl's examples



Boy's examples



Examples of footwear which DO NOT COMPLY with The Department of Education's WH&S guidelines

